

# Call For Entries

## The North America Tekla Structures BIM Awards 2010

### > The Competition

Enter the North America Tekla Structures BIM Awards 2010!

The annual North America Tekla Structures BIM Awards is a great way for you to show off your skills and achievements. Your peers, existing and potential clients can see first hand the vast possibilities you offer. This contest has been very successful over the past several years and we invite you to submit your project. Winners will be showcased in many places, like the Tekla website and trade publications. This is a great form of exposure and you can win a nice prize. Best of all - it's free to enter! Winning projects for each category will receive a Tekla Structures Viewer and two (2) tickets to 2011's User Meeting\*. All participants will receive a special gift. All North America BIM Award winners are automatically entered into the Tekla Global BIM Awards. **ALL** Tekla Structures Users are encouraged to participate!

Submit your project on or before **July 23, 2010** and show everyone what you have done with Tekla Structures!

### > Award Categories

#### Category 1 – Industrial/Civil Model – Steel and/or Concrete

*Industrial/Civil category examples include power and process facilities, materials handling, heavy concrete installations, water treatment plant, bridges.*

#### Category 2 – Commercial/Institutional Model – Steel

*Model is predominantly steel but can include other materials. Commercial/Institutional examples include office, retail, government, sporting, religious, performing arts, educational, parking structures.*

#### Category 3 – Commercial/Institutional Model – Concrete

*Model is predominantly concrete but can include other materials. Commercial/Institutional examples include office, retail, government, sporting, religious, performing arts, educational, parking structures.*

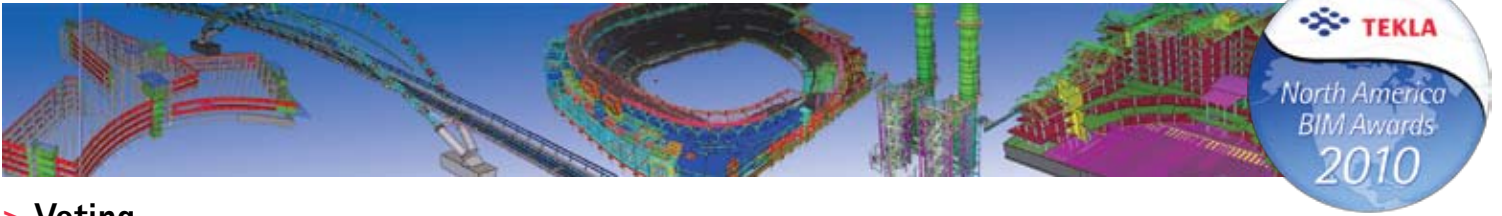
**Category 1, 2, 3 entries will be judged primarily on the complexity of the model.**

#### Category 4 – Collaborative Project

*Commercial/Institutional projects in which Tekla Structures has played a significant role and multiple parties have collaborated using BIM to benefit project delivery. Project may be submitted by one Tekla Structures User company or multiple User companies.*

**Category 4 entries will be judged primarily on the extent of collaboration between project participants and innovation in the work process made possible by the use of BIM applications – and secondarily on the complexity of the model.**

*\* If you cannot attend the 2011 User Meeting the two tickets will be valid for the 2012 User Meeting*



## > Voting

Categories 1, 2, and 3 entries will be judged by a ballot of Tekla Users in North America (online and at the User Meeting). Online voting will open the week of August 9-12. Online votes will count as one vote. Each individual vote cast at the User Meeting will count as two votes. The total number of votes will decide winners in each category. No Tekla employee, partner or reseller agent will be allowed to vote.

Category 4 entries will be judged by a panel of experts.

## > Submission Requirements

This year Tekla is only accepting electronic entries.  
The deadline for entries is **July 23, 2010**.

### Mail CD entries to:

Tekla, Inc.  
Attn: Model Drawing Competition 2010  
114 Town Park Drive, Suite 500  
Kennesaw, GA 30144

### Email entries to:

info.us@tekla.com  
(Files sent via email cannot exceed 17MB)

The following electronic submission requirements must be met to be considered:

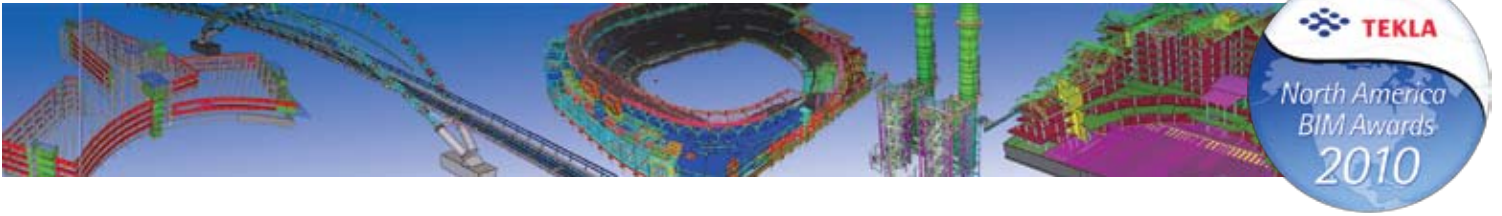
### Category 1, 2 and 3

- Completed Entry Form, signed and dated. (See below for Entry Form)
- A brief description of the project, including project size, use of Tekla Structure on the project, and other relevant information (200 words or less)
- Photographs and screenshots (total of 5 maximum, must be 300 dpi) are recommended – but not required
- Isometric GA Drawing PDF format (saved in a drawing size of A1 or "D" sized – 24"x36") The pdfs should not name the project participants so that judging can be impartial.
- A Web Viewer model (see following page describing how to send a Web Viewer model).

Web Viewer models don't currently include rebar or reference models so if your model submission includes those entities you should submit a Tekla Structures model instead – complete model folder (not drawings) plus any customized catalogs used by the model, e.g. profdb.bin. Please indicate which version of Tekla Structures was used to create the model.

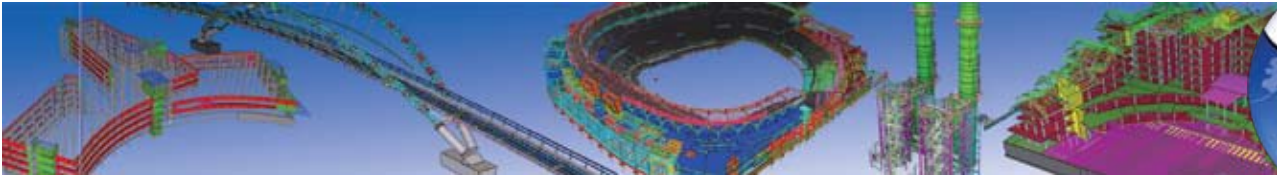
### Category 4

- Completed Entry Form, signed and dated. (See below for Entry Form)
- A PowerPoint presentation of up to 15 slides with text and images describing project overview, collaborative work process, software tools used – Tekla Structures and others, benefits to the project from BIM collaboration. Delivered in .PPT format on plain template. The slides should not name the project participants so that judging can be impartial.
- Tekla Structures model – complete model folder (not drawings) plus any customized catalogs used by the model, e.g. profdb.bin. Please indicate which version of Tekla Structures was used to create the model.



## > Rules and Regulations

1. Only one (1) model entry per category will be permitted for this competition (Companies can submit in multiple categories).
2. Each entry must include a signed and correctly filled out Entry Form.
3. The Tekla Structures license that created the model and drawings must legally reside in North America (irrespective of construction in the US, or company HQ in the US).
4. Only Tekla Structures models created and completed between the dates of January 2009 through July 2010 will qualify for this competition.
5. In Categories 1, 2 and 3 NO portion of the model submitted to the competition can be generated, in any manner, by using another [program (CAD or otherwise), outside of the Tekla Structures program. In Category 4 Tekla Structures model entries may include reference models originating from other BIM programs.
6. All models submitted for this competition must NOT have been entered in any other prior similar competition
7. In Categories 1, 2 and 3 the entry submitted by a company for this competition must have been modeled by the company submitting the entry and NOT by an outside company or individual using the Tekla Structures program and doing sub-contract work for the company submitting the competition entry. In Category 4 entries may include portions of the Tekla Structures model that were created by multiple project participants as well as reference models created outside Tekla Structures.
8. All entries submitted for this competition must arrive prior to or on July 23, 2010 via CD by mail, FTP, or email. Entries received after this date, will NOT be entered into the competition, regardless of the reason for its late arrival. Tekla will not be held responsible for any late entries due to the tardiness of the shipping courier's delivery being after normal business hours. To guarantee against entries arriving late, please ensure that you ship your entry for this competition early to meet the deadline date.
9. Winners must be present at the User Meeting '10 to accept award. If Winner is not present the entry with the second highest number of votes will be selected as "Winner."



# > North America Tekla Structures BIM Awards 2010 Official Entry Form

**Submitting Company** *(If Category 4 entry list additional companies here or on attached sheet)* \_\_\_\_\_  
\_\_\_\_\_

**Contact Person** \_\_\_\_\_

**Contact Address** \_\_\_\_\_

**Email Address** \_\_\_\_\_ **Telephone** \_\_\_\_\_

**Project name** \_\_\_\_\_

**Category** \_\_\_\_\_ **Construction Completion Date** \_\_\_\_\_

**Project Address** \_\_\_\_\_

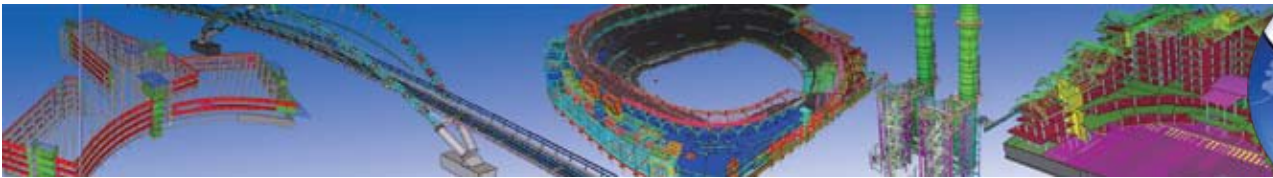
**Brief Project Description (200 words or less)** \_\_\_\_\_  
\_\_\_\_\_  
\_\_\_\_\_  
\_\_\_\_\_  
\_\_\_\_\_  
\_\_\_\_\_  
\_\_\_\_\_  
\_\_\_\_\_  
\_\_\_\_\_  
\_\_\_\_\_

**Brief paragraph that states why the model should be selected as a Tekla BIM Awards Winner**  
\_\_\_\_\_  
\_\_\_\_\_  
\_\_\_\_\_  
\_\_\_\_\_  
\_\_\_\_\_  
\_\_\_\_\_  
\_\_\_\_\_

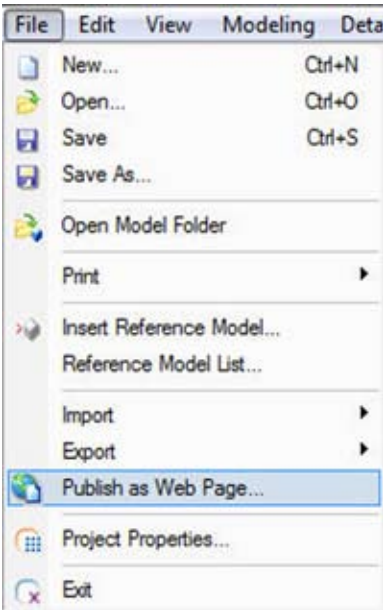
"I understand that the contents of this entry become the property of Tekla and will not be returned. I further understand that Tekla shall have the right to make all submitted entry materials available for publication without compensation, real or implied, and without claim by contestants against the judges, Tekla or its staff."

**Signature** \_\_\_\_\_ **Date** \_\_\_\_\_

With this statement, the entrant is extending to Tekla unlimited license to use the materials submitted with the entry.  
**Reminder: All entries must be received no later than July 23, 2010.**



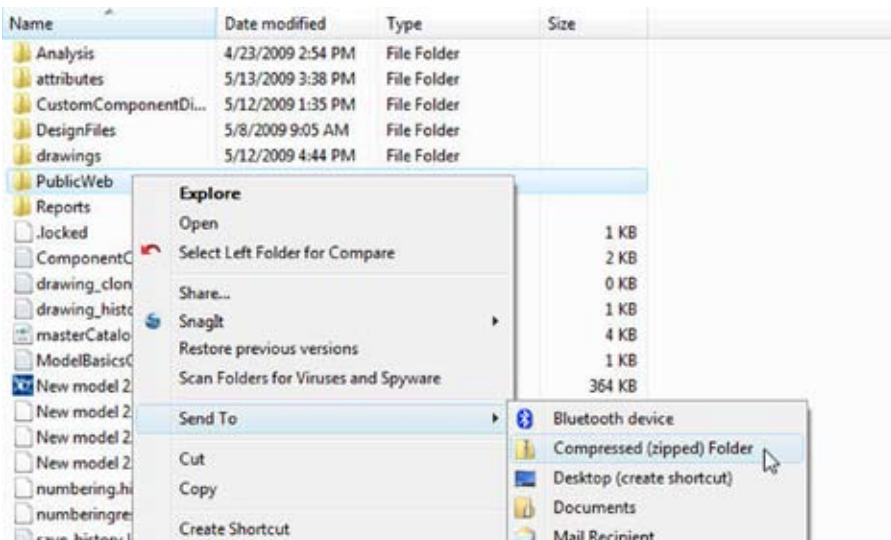
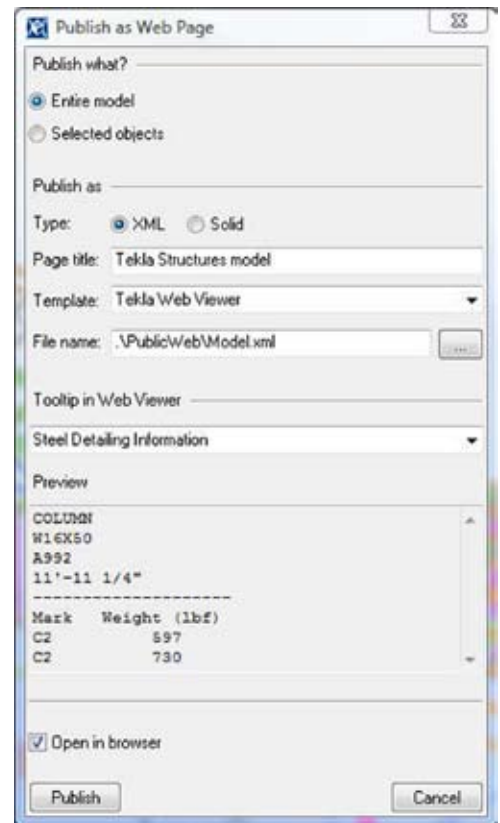
# How to Send Us Your Web Viewer Model



You can send us the Web Viewer of the model:

Go to the File tab and click 'Publish as Web page'.

Set the Web Viewer settings as shown:



Publish model.

Again open the model folder.

You will see a folder called public web, please zip this complete folder and email to: **info.us@tekla.com (email submissions cannot exceed 17MB) or mail a CD/DVD to:**

Tekla, Inc.  
 Attn: Model Drawing Competition 2010  
 114 Town Park Drive, Suite 500  
 Kennesaw, GA 30144