



**TEKLA**<sup>®</sup>

User Workshops 2010

18th February | Cleckheaton



## *Agenda and information*

This years workshop team:

We have specialists in Precast, Engineering and Cold Rolled on hand throughout the day to put your questions to.



Roger Butterworth  
Service Manager



Joanne O'Connor  
Support Tech



Mathew Ayrton  
Support Tech



Steve W. Jones  
Support Tech



Fraser Pridmore  
Support Tech



Nick Collinson  
Support Tech



Jason Gething  
Engineering



Wayne Thompson  
Cold Rolled



Steven Jackson  
Precast



Symon Schofield  
API Specialist



**TEKLA**<sup>®</sup>

# Welcome to the Tekla UK

## Agenda

09:00	Arrival and registration		
09:30	Welcome and objectives for the day		<b>Roger Butterworth</b>
	Staff introductions An overview of Tekla		
09:45	Introduction to 16.0		
	New installation process via Extranet FLEXnet, Multi-User, Self Learning Extensions		<b>Joanne O'Connor</b>
10:15	Service Best Practices		<b>Roger Butterworth</b>
	Process Utility		
10:45	Introduction of Breakout Sessions		<b>Steve W. Jones</b>
	Organising into groups		
11:30	Breakout Sessions		
	<u>Modelling</u> Mathew Ayrton Fraser Pridmore	<u>Drawings</u> Roger Butterworth Steve W. Jones	<u>System Customisation</u> Joanne O'Connor Nicholas Collinson
12:15	Lunch		
13:00	Breakout Sessions		
	<u>Modelling</u> Mathew Ayrton Fraser Pridmore	<u>Drawings</u> Roger Butterworth Steve W. Jones	<u>System Customisation</u> Joanne O'Connor Nicholas Collinson
14:15	Breakout Sessions		
	<u>Modelling</u> Mathew Ayrton Fraser Pridmore	<u>Drawings</u> Roger Butterworth Steve W. Jones	<u>System Customisation</u> Joanne O'Connor Nicholas Collinson
15:30	Regroup and feedback		<b>Roger Butterworth</b>
15:45	Wrap up and questions		
16:30	Close		

# User Workshop 2010!

## Breakout Sessions – What to expect

### Modelling

- Roles – How these affect you
- Default settings
  - Project Settings
  - Options
  - Snaps
  - Views
  - Grids
- Features
  - Snapping
  - Mini toolbar
  - Numbering
    - Selected Series
    - Repairing
  - Welds Improvements
  - Locating objects in the model
    - Zoom selected
  - Filter Improvements
  - Radial Grid Plugin
- Custom Components
  - Cell & Castellated Beam
  - Open Mesh Flooring
  - Cold Rolled
- Object Representation
- Profile Catalog Updates
- Bolt Catalog Updates
- Reference Objects
- IFC Conversion Improvements

### Drawings

- Master Drawing Catalog (Previously Wizards)
  - New A3 & A2 automated, plus manual A1 & A0
- Templates
  - Common Rules
  - Reworked
- Naming conventions
- Cloning
  - Fabrication
  - General Arrangement
- Features
  - New filters in drawings
  - New mini toolbar for modifying objects in drawings
  - New symbol file browser
  - Moving drawing objects: objects visible while dragging
  - Detailed object level settings
- Reports
  - Organisation
  - ID Reports
  - Restructure
- Printing & Exporting
  - Printer Catalog

Refreshments will be provided throughout the day.

# Breakout Sessions – What to expect

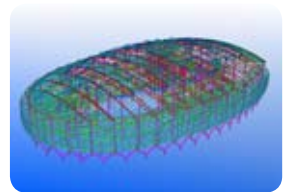
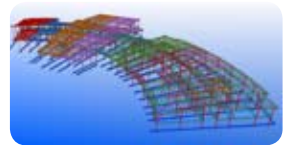
## System Customisation

- Setting the Firm Folder – best practice
- Roles – an alternative to XS\_FIRM
- Maintaining project settings
- Model Templates – an alternative to XS\_PROJECT
- Setting Company specific User Defined Attributes
  - Objects.inp
- Environment Variables
  - New to 16.0
- Where should these be set
  - Advanced Options
  - User.ini
  - Options.ini
  - Firm.ini
  - Project.ini
- Impact
- Reports , Templates Et Layouts naming convention
- Changing the Company Logo

## Tekla UK Model Competition

Make plans to participate in the Tekla UK Model Competition 2010; it's a great way to gain publicity for your company, especially if you win!

The competition opens on the 4th May 2010. To enter we require your model folder, a brief description of the project and a photograph or artists impression of the finished job. Once entered, all details are uploaded straight to the Model Comp website. The website gains great exposure and its popularity is steadily growing with each year.



> Tekla's model-based software products make customers' core processes more effective in building and construction and infrastructure management. Tekla Corporation has area offices and partner organisations worldwide. International operations account for more than 80% of net sales. Founded in 1966, Tekla is one of the longest operating software companies in Finland.

### CONTACT:

**Joanne O'Connor**  
**Support Technician**

Tekla (UK) Limited  
Tekla House, Cliffe Park Way,  
Morley, Leeds.

Tel. +44 (0)113 307 1200

Fax. +44 (0)113 307 1201

Email. [support.uk@tekla.com](mailto:support.uk@tekla.com)

[www.tekla.com/uk](http://www.tekla.com/uk)