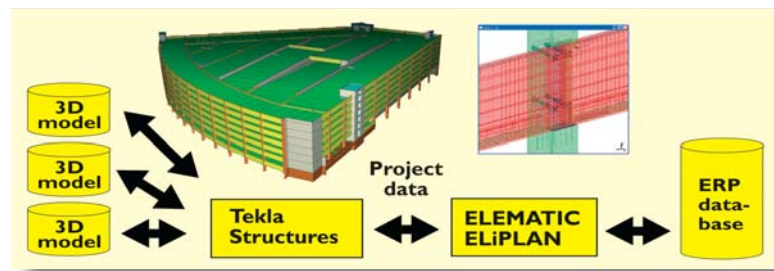


ELiTE Precaster's Profitmaker

ELiTE, a unique two-directional integration of 3D modeling and precast production planning systems is a single control system for managing all operations, from tendering to shipping.

Interested in minimizing downtime, just-on-time deliveries, less data processing work, savings in labor costs? Yes to one or more means yes to profitability and predictability – yes to gaining speed, efficiency and uniform quality!

ELiTE the way to Tune Up Your Software!



All data, from piece detailing, geometry and reinforcing, to materials and erection procedures can automatically be transferred from 3D models to ERP. After processing, the data is returned back to the design software for easy viewing with the 3D model... This is not only 3D – but a 5D or even 7D profitmaker for all precasters!

Practical and Efficient for Any Precast Concrete Production

Main advantages of this integrated system:

Reduces lead times from sales to erection

- Powerful modeling guarantees greater speed and efficiency
- Automated routine tasks
- Focus on design decisions

Enhances efficiency of workflow and improves quality of design work

- Integrated design and detailing with other operations
- Interoperability improves overall efficiency
- All structural design work in one model
- Eliminates detailing errors

Maximizes your productivity

- Better overall process improves project cycle times
- Reduced costs attributed to detailing errors

Less failures in data transmission

- Modeling software produces 3D models for precast production
- Workshop drawings, element detail information and BOM (bill of materials) are generated automatically

Improves data management

- Based on information derived from 3D software
- Cost estimation is calculated in ERP
- Automatically generates a project card once a quotation turns into an order
- Creates a library!

Provides a total view of the factory

- Factory capacity seen “at a glance”
- Helps determine delivery time
- Helps estimating manufacturing time
- Operational predictability via daily scheduling

Accurate raw material management

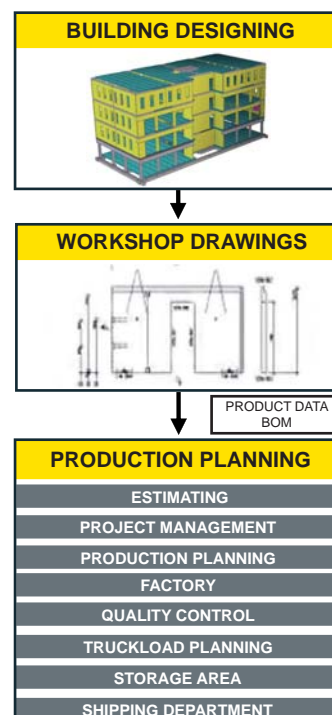
- Calculates the used amounts of raw materials
- Gives estimates for future material consumption

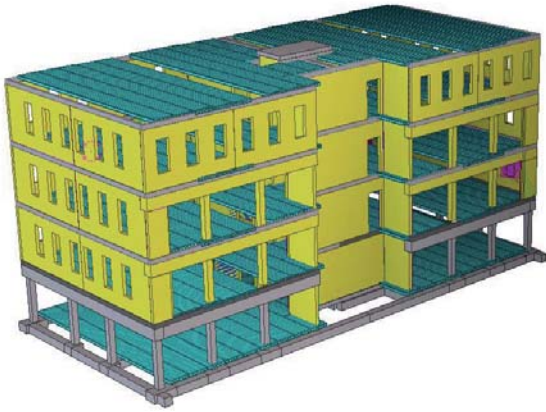
Accurate project plans

- Project cost/profit can be evaluated
- Better estimation of future projects

Win more competitive tenders

- Powerful visualization





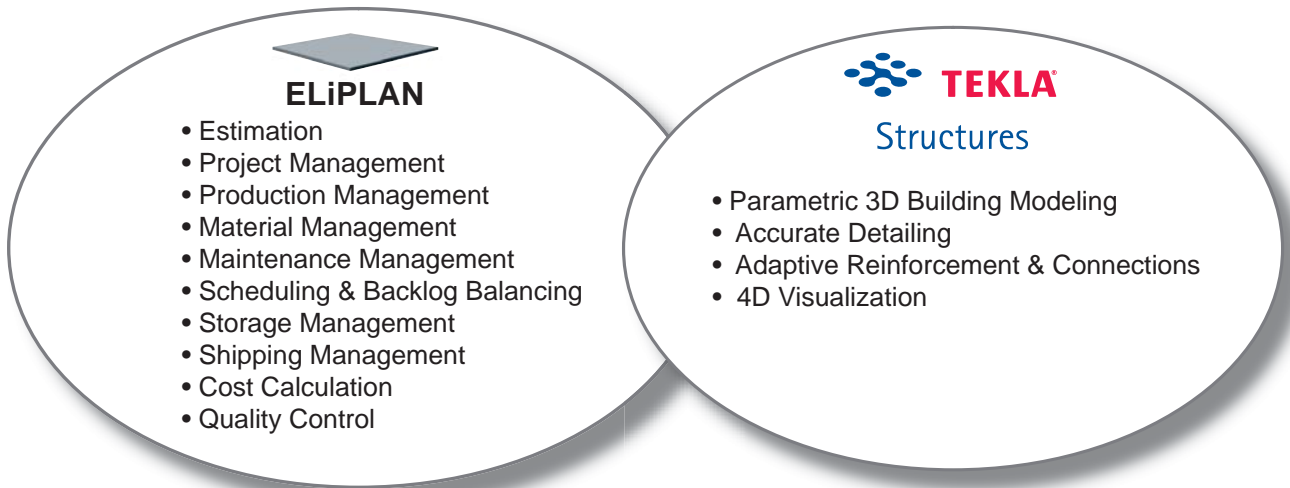
ELiTE, Precaster’s Profitmaker consists of:

Tekla Structures

- First real parametric 3D structural Building Information Modeling (BIM) software solution for precast concrete designers and producers
- A unique modeling and detailing solution integrating the entire structural workflow, from sales and conceptual design to detailing, manufacturing and erection

ELiPLAN for Windows®

- The most advanced Enterprise Resource Planning System (ERP) for precast concrete factories
- Enterprise Resource Planning software offering a centralized real-time system for controlling the entire production flow of a precast factory



ELiTE

Added Features through Integration

- Project Data
- Piece Data
- Embedded Materials
- Reinforcement
- Erection Section
- Manufacturing Status
- Planned Manufacturing Date