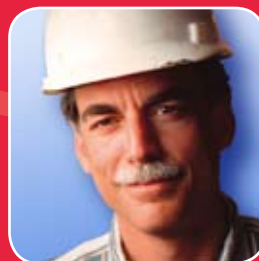
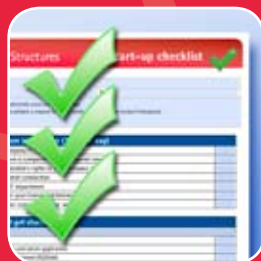




**TEKLA** Structures



# SOFTWARE MAINTENANCE

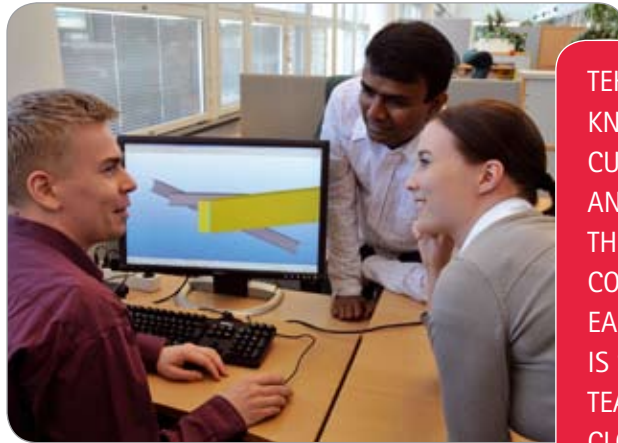




# TEKLA Structures

## MAINTENANCE A CLOSER CONNECTION

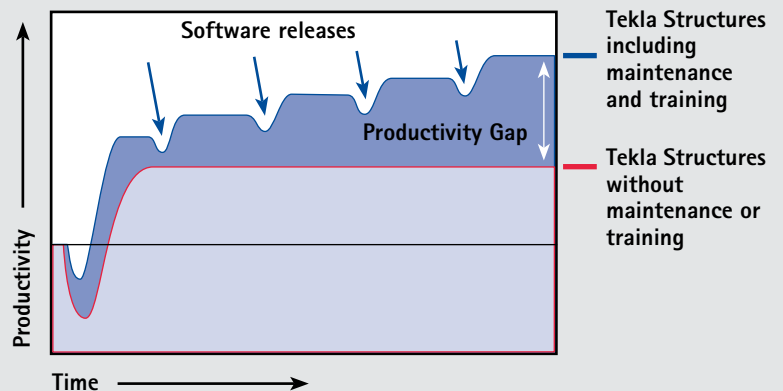
> Only customers on maintenance are allowed access to the Tekla Extranet, an abundant user community that offers a wide range of support and material, including a start-up checklist, self-learning videos, release notes and top new features, product extensions, discussion forums, and FAQ. If you can't find a solution to your problem from the Extranet, you can e-mail or call local support whenever you have a question. Each local support unit is supported by a global team that works in close cooperation with Tekla product development.



TEKLA SALES AND SUPPORT KNOW MAINTENANCE CUSTOMERS BY NAME, AND CUSTOMERS KNOW THEM, WHETHER IN ONLINE CONTACT OR FACE-TO-FACE. EACH LOCAL SUPPORT UNIT IS SUPPORTED BY A GLOBAL TEAM THAT WORKS IN CLOSE CONNECTION WITH PRODUCT DEVELOPMENT.

*To make the most of your software tool, start seeing it as a continuous investment instead of a one-time purchase. The companies that take advantage of annual software maintenance are the ones who gain the biggest productivity increase and tend to find themselves at the forefront of the industry.*

*Tekla values customer commitment and wants to make sure you get the most out of your investment. Every year we invest nearly 30% of revenue in product development. Purchasing software maintenance from Tekla ensures effective implementation of any Tekla Structures software configuration, regardless of version.*



## TRAINING AND NETWORKING

> Tekla helps all new Tekla Structures users get started as well as maintain their development. In addition to free self-learning material on the Web, customized training sessions can be arranged either at the your or Tekla premises. A well-defined training course provides a jump start with the software and later helps to maximize its use to the fullest potential.

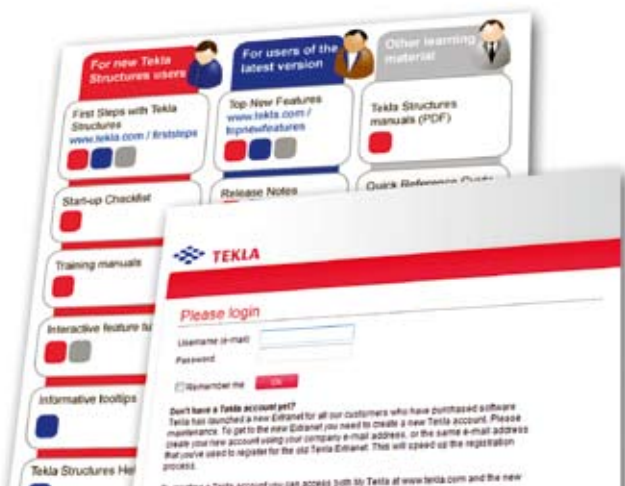
Moreover, all users holding a valid software maintenance agreement are invited to join annual local Tekla Structures user meetings. In the meetings you will receive valuable information on the latest developments as well as get an opportunity to discuss regional requirements and issues related to the software or industry. Tekla events are a key opportunity to discuss Tekla Structures software with specialists and product developers as well as to learn from other users.



## VERSION UPDATES

> Customer feedback plays an important role in Tekla product development. As a result, several version updates are published to complement the annual main release of Tekla Structures software. Customers on maintenance get fast access to the latest release through the Tekla Extranet and may participate in its beta testing.

Taking advantage of the updates as soon as they are available can make a substantial difference in your day-to-day productivity, keeps you ahead of the pack and at the cutting edge of technology, leading to increased efficiency and a higher return on your software investment. All users with a valid maintenance agreement are entitled to new updates without additional charge.



## TEKLA STRUCTURES EVOLUTION

### Version 11

- > New template editor
- > New parametric sketching tool
- > Associative drawings
- > New NC file interface
- > Intelligent parametric models

### Version 12

- > Improved usability throughout
- > Enhanced grid tools and visibility options
- > Automatic anchor bolt plans
- > Multi-level assemblies
- > IFC 2X3 functionality

### Version 13

- > Enhanced drawing production and management
- > 4D planning tools
- > Faster handling of large Tekla Structures models
- > Improved multi-user functionality
- > Greater time savings and faster project delivery

### Version 14

- > Task-oriented user interface
- > New more flexible licensing system
- > Better multi-user management tools
- > More intelligent interfaces to other software and machinery to support industry workflow

### Version 15

- > Improved visualization
- > Intuitive modeling and detailing
- > Bigger than ever models and projects
- > Enhanced output and drawings
- > Interoperability for efficient project collaboration



**TEKLA** Structures 16

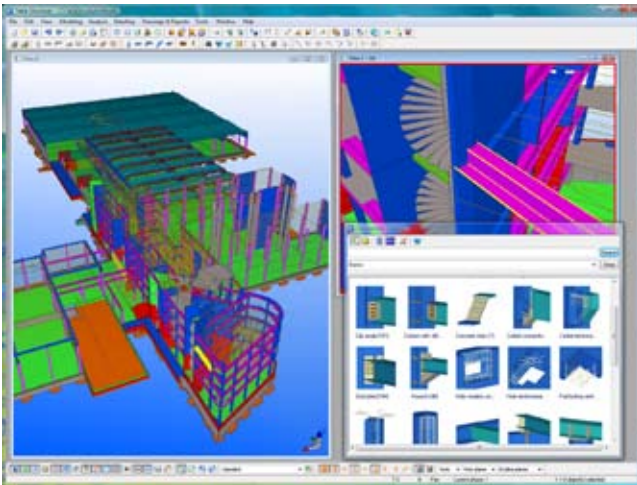
Released in 2010!

# TEKLA STRUCTURES – INTELLIGENT 3D MODELING



> Tekla's model-based software products make customers' core processes more effective in building and construction and infrastructure management. **Tekla Corporation** has area offices and partner organizations worldwide. International operations account for more than 80% of net sales. Founded in 1966, Tekla is one of the longest operating software companies in Finland.

> Tekla's technology creates new opportunities for the construction industry. **Tekla Structures**, the most advanced BIM (Building Information Modeling) software on the market, provides an accurate, dynamic, and data-rich 3D environment that can be shared by contractors, structural engineers, steel detailers and fabricators, as well as concrete detailers and manufacturers. The highly detailed as-built structural models created in Tekla Structures enable the highest level of constructability and production control. Centralizing model and non-model based data into the model allows for more collaborative and integrated project management and delivery. This translates into increased productivity, elimination of waste, and an enhanced value for structural modeling.



## CONTACT:

Tekla Corporation (HQ)  
Metsänpojankuja 1, P.O. Box 1  
FI-02131 Espoo, FINLAND  
Tel. +358 30 661 10  
Fax +358 30 661 1500



Find your local Tekla contact at

[www.tekla.com](http://www.tekla.com)