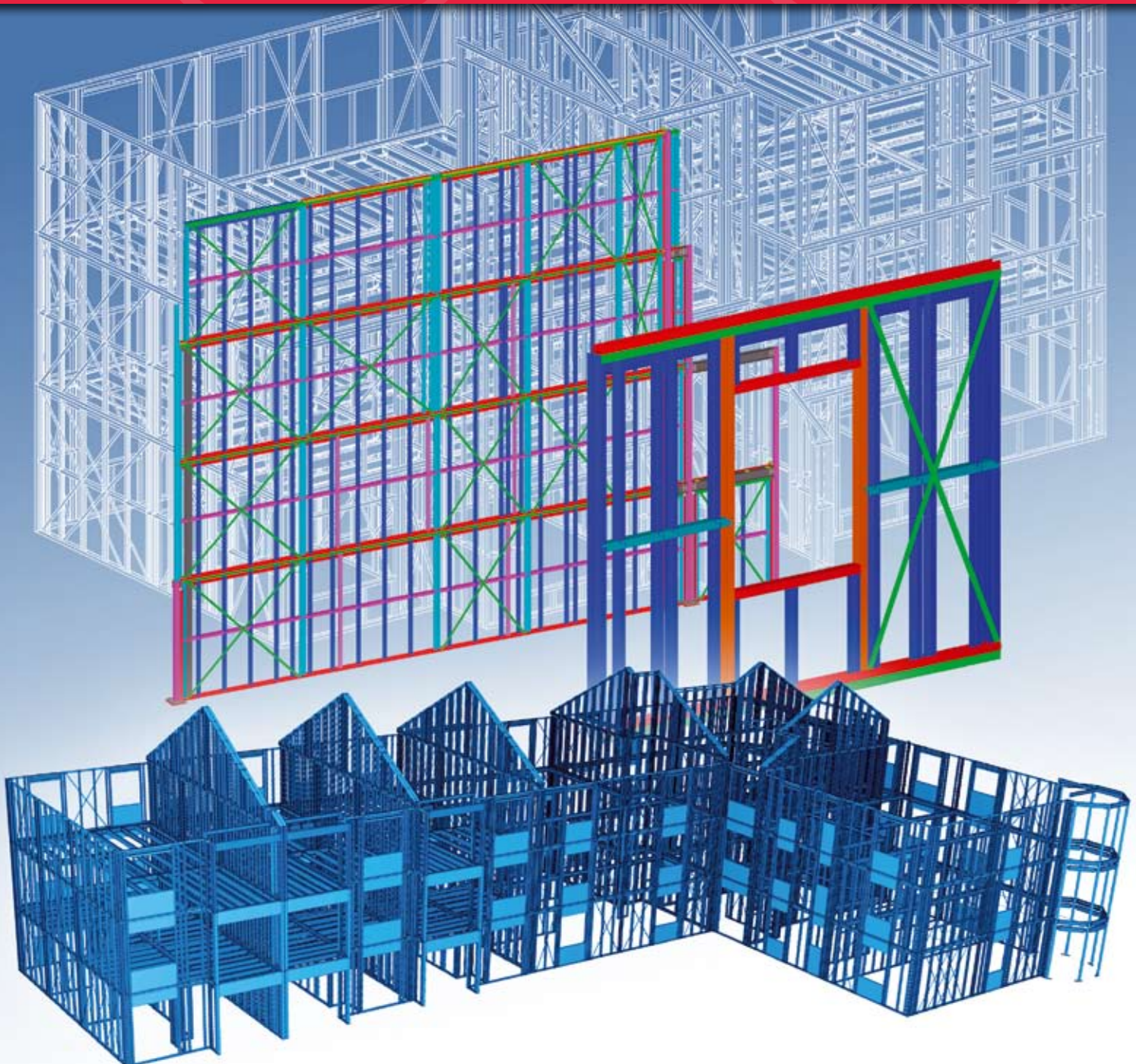




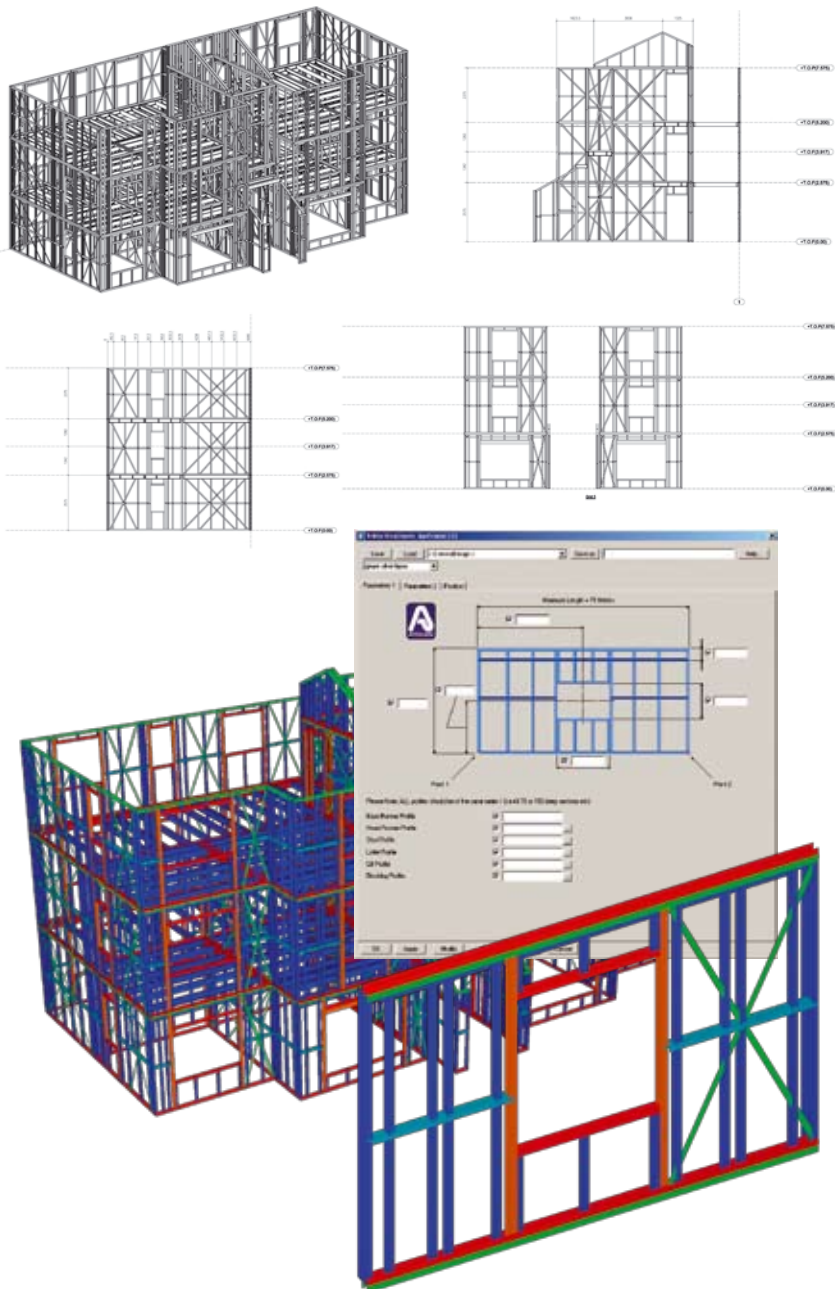
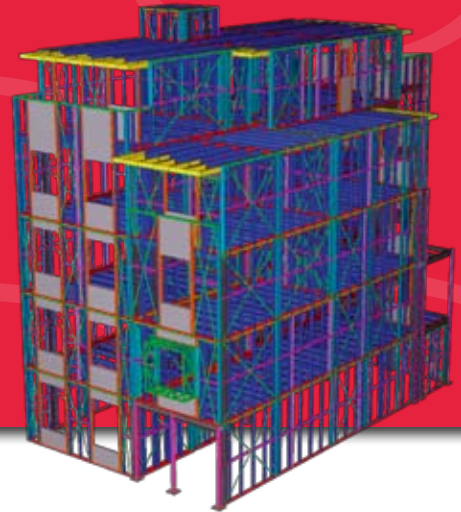
**TEKLA**® Structures

# *Light Metal Framing*



## ➤ IDEAL SOLUTION FOR LIGHT METAL FRAMING

- Model and detail light gauge steel construction systems for a variety of market sectors including residential, commercial and health care
- Ideal for engineers and detailers involved in the design, specification and detailing of light framing, modular, off-site and sustainable building projects
- Resolve potential conflicts, generate detailing and materials information, and drive fabrication from the 3D model



➤ Tekla Structures is a versatile 3D modeling and detailing solution that integrates entire project workflow from sales and bidding to detailing, fabrication and erection, no matter what the material.

➤ Tekla Structures helps designers to detect any possible issues within the given construction project and clarifies those issues prior to site installation. The clear advantage is increased efficiency in the design phase, which ultimately results in minimized product cost and shorter delivery times to customers.

➤ Receive design information from third party sources in traditional 2D and 3D formats, which otherwise would require time-consuming review and collaboration by project designers.

### CONTACT

**Tekla Corporation (HQ)**  
 Metsänpojankuja 1, P.O. Box 1  
 FIN-02131 Espoo, FINLAND  
 Tel. +358 30 661 10  
 Fax +358 30 661 1500

Find your local TEKLA contact at

[www.tekla.com](http://www.tekla.com)